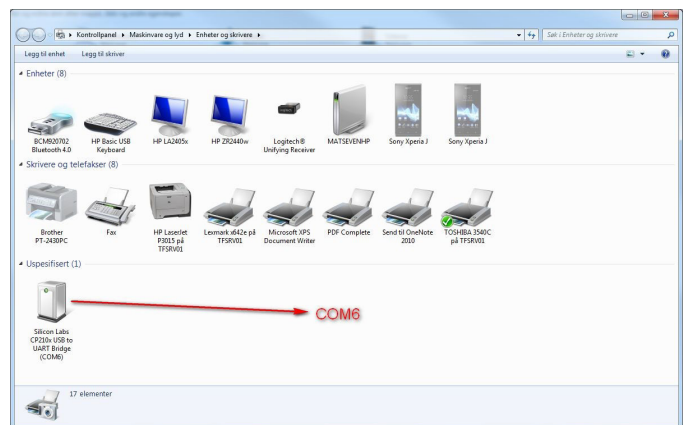


Software update for

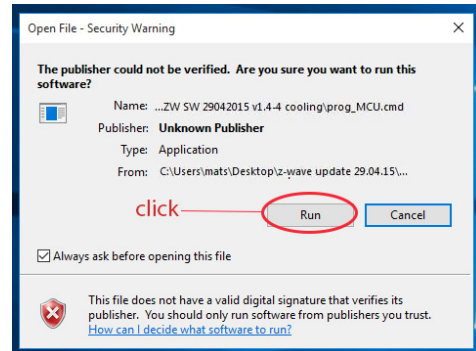
HEATIT Z-WAVE

1. Install (if not installed on your computer) CP210X driver*.
2. Extract files (ZW SW 29042015 v1.x). (date and software version will change depending on version)
3. Plug the cable to your pc and check that it is detected as a Com-port. You can see this in "devices and printers in Control Panel" Remember the Com-port number (COM6 etc). Note: Silabs CP210x driver needs to be installed - some windows versions have this pre-installed. See illustration 1.
4. Edit prog_MCU.cmd file to meet your Com-port.
 - a. Right clicking the file and choose "Edit".
 - b. Push "Run". It opens in e.g notebook.
 - c. Set COMPORT=COMX, where COMx is your Com-port, for example COM6.
 - d. Save the file
5. Power down the thermostat before doing anything else (or take it off the wall and wires) **THIS IS VERY IMPORTANT!**
6. Remove the top cover (lense part, see installation manual) to expose the middle cover and display.
7. Find 6 holes in the middle cover plastic in the right side of the display. Stick the adapter needles in the holes, with the red part of cable facing down! Press them firmly in and hold in place. Display should be dimly lit with some figure in the display. See illustration 2.



- *This driver works with Windows XP/Server 2003/Vista/7/8/8.1
- If you are running another operating system look for your driver here: <https://www.silabs.com/products/mcu/Pages/USBtoUARTBridgeVCPDrivers.aspx>

8. Run prog_MCU.cmd. See illustration 3.



9. A new window opens. It should say "Pgm mode entered" and no error messages should appear on the screen. It should complete writing to flash. SW is now updated. See illustration 4.

10. Display on thermostat shows 1.x (depending on software version)

